

MORTON MOBILE THEATRE



USER MANUAL



Dear user, thanks for choosing our Morton mobile theatre products. To help you to get to know this device better, please read thru this user guide before any operation. Also you are kindly requested to check thoroughly the accessories and the main unit to make sure there is no any parts that are missing or damaged.



INDEX

CAUTIONS	1
SPECIFICATION	2
PARTS ILLUSTRATION	3
ACCESSORIES	4
OSD	4
BASIC OPERATION	5
SYSTEM MENU	6
MUSIC PLAY	9
VIDEO PLAY	11
AV IN	12
PICTURE BROWSING	13
EBOOK	14
EXPLORER	15
USB DISPLAY MODE	15
RECHARGING	15
FIRMWARE UPGRADE	16
TROUBLE SHOOTING	17
DISCLAIMER	17

CAUTIONS



To avoid fire, electrocution or damages to the devices, you are kindly requested to pay attention to the following:

Never leave this device under rain or at humid places or beside any liquid container.

Use only the accessories included in the original kit.

Don't disassemble the device, remove the cases and etc. There are no any parts inside that an end user can fix or repair. If services needed, please contract authorized dealers or technician nearby to do it for you. Any unauthorized open-up or disassembly will result in the invalidity of the warranty.

Don't smash this device or drop it to the ground, avoid any severe shock to the device, or it will cause damages to the devices.

Please follow strictly the intellectual property rights or copy-rights laws: All unauthorized copies or reproductions of the contained film or clips or publications for commercial purposes are infringing the copyrights laws.

Do not disconnect or turn off the power abruptly when device is formatting its disk or uploading/downloading files, or it will cause the device malfunction.

Because of the different calculation formula for capacity, this device system firmware and flash memory partition needs to occupy certain spaces, therefore, the memory capacity specified in this device could have certain discrepancies from what is shown on the computer when connected. This is depend on the version of the system firmware and also the type of the flash used.

Virus could cause problems and may destroy the files and firmware of this device, please use anti-virus software to keep you system clean. If in case the device were virus infected, please format the disk and then upgrade the firmware from an virus free computer.

Temperature may turn up a bit during recharging, this is normal and will not affect usage.

Different software and hardware version can have different feature or performance, therefore we reserve the rights to vary the products feature and functionality without prior notice.

Please do not use this device in extreme hot, cold, dusty or humid places or surroundings. And special attention are requested in following places or situations:

A. Dusty and sandy places

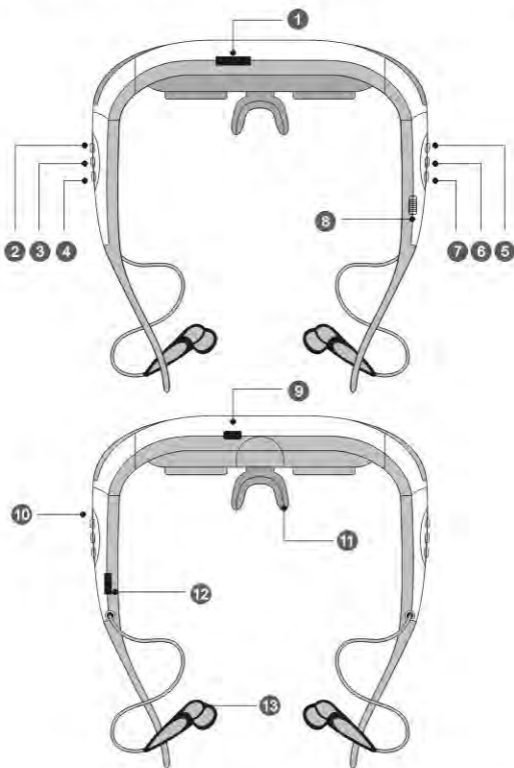
B. Watery area or raining days, beaches and etc.

We would like to request your kind attention that not to leave this device in your pants pocket while seated down, or stuff this device into any fully stuffed bags to avoid any damages to the device.

SPECIFICATION

Virtual Screen	50 inch LCD virtual display (2M distance)
Display Resolution	320*240 (QVGA)
PC/Laptop Connection	USB2.0 High speed data transfer, 4MB/S
Memory	2GB inbuilt memory, TF slot support 32GB max
Power Supply	DC 3.7V/500mAh AC 110-240V
Power Consumption	< 0.9W
Battery Duration	2-3 hours
Viewing Angle	26°
Color Depth	24bit
Video Input	Composite AV
Audio Output Max	(L) 10mW + (R)10mW (32 Ohm)
MP3 Bit Rate	64K bps, 320 K bps
WMA Bit Rate	64K bps, 384K bps
Sample Rate	8 -96KHz, SNR>90db
Frequency Response	20Hz-20KHz
S/N Ratio	>90db
Audio Distortion Degree	0.03%
Music Format	MP3, WMA, FLAC and APE
Video Format	RM/RMVB/AVI/MPEG/FLV
Ebook Format	TXT
Picture Format	JPEG, BMP, GIF
Operation Temperature	0°C~40°C
Languages	SCH, En, Fr, De, It, Es, etc. over 20 languages
Operating System	Windows 2000/XP/Vista
Net Weight	100g (Earphone Included)

PARTS ILLUSTRATION



1. TF card slot

2. + scroll Down, Volume UP

3. - Scroll UP, Volume Down

4. ↻ Esc, Exit

5. ▶ Next, Fast FWD

6. ◀ Last, Fast RWD

7. ↵ OK, Enter, Menu, Start/Pause

8. Power Switch

9. USB port \ DC input

10. Power / Recharging indicator

11. Nose Bridge

12. AV in Jack

13. Headset

ACCESSORIES



Mobile theater



Carry case



Eyepatch



AV cable



USB Charging Cable



USB AC Adaptor

OSD



Main menu



Music Play



Video Play

BASIC OPERATION

Power On/Off

Power On: slide the power switch to “ON” side, device will display the welcome screen and then enter into the main menu.

Power Off: Slide the power switch to “OFF” side, device will shut down completely.

A-B repeat

Under music mode, long press \oplus key for 2 seconds to enter into repeat mode. Now an icon A will appear at the bottom of the screen, this is the starting point of the repeat, then long press the \oplus key again for 2 seconds, an icon “B” will show up, this is the ending point. After this, product will start repeating the segment you have chosen. Press again the same button for 2 seconds will shut off the repeating mode.

PC Connection and File Transfer

Connect the product to the PC thru USB cable, device will be shown as a external storage drive, just pull and drag your favorite music or video files to the device, transfer will be done. No third party driver needed.

Volume adjustment

Under Music or Video mode, press \oplus key to increase the volume and press \ominus key to decrease the volume.

Short press will increase/decrease volume by single step, long press will increase/decrease the volume continuously.

Fast forward and Fast Rewind

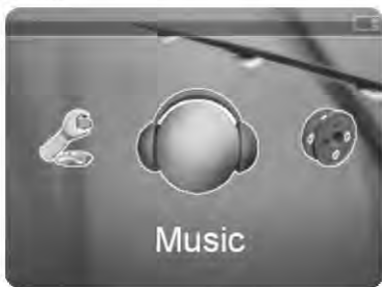
Under Music or Video Mode, long press the \ll key or \gg key to rewind or forward the files, short press of the key to jump to the last or next file.

File Browsing.

Under Video, Music and Picture mode, press \ll and \gg key to browse the files.

SYSTEM MENU

Main Menu



When start up and enter into the main menu, short press the + key or - key or ◀ or ▶ key to scroll between different modes, i.e. Music/Video/Picture/Ebook/Explorer/Setup, Press ↵ to enter into the submenu of the modes selected. Press ↻ Key to exit from current modes or to the main menu.

Settings

Under main menu, select “SETTINGS” and press ↵ to enter into system setup. Press ◀ or ▶ key to choose the submenu and then set your preference.



Display Settings.

Under Display settings, press \downarrow to enter to choose backlight off time from 5 seconds to 30 seconds and "ALWAYS On", press \downarrow to select the time you want the backlight off and then press \leftarrow to exit to submenu or choose display status menu. Press \downarrow to enter and then press \leftarrow Or \rightarrow key to select hide or display and then press \downarrow to confirm.



System Settings

Select system settings, press \downarrow to enter into the submenu, you will see firmware upgrade and system restore.

1. Firmware upgrade: press \downarrow to select whether to upgrade firmware, press \downarrow to continue and press \leftarrow to exit
2. System Restore: press \downarrow to select whether to restore the system, press \downarrow to continue and press \leftarrow to exit.



1



2

Desktop Settings

Select desktop settings, press \downarrow to enter into the submenu, press \leftarrow or \rightarrow key to select the style of the desktop you want and press \downarrow to select, after that, press \curvearrowright to exit.



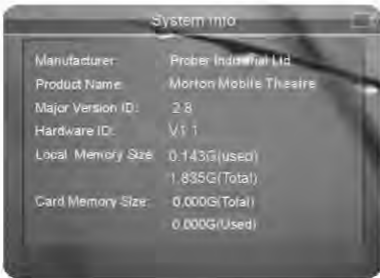
Language Settings

Select language settings, press \downarrow to enter into the submenu, press \leftarrow or \rightarrow key to select the language you want and press \downarrow to select, after that, press \curvearrowright to exit.



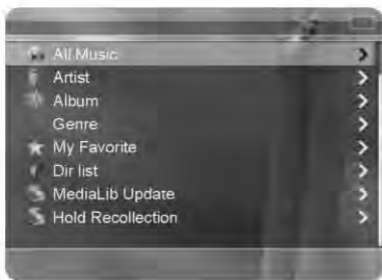
System Info

Select system info, press \downarrow to enter, manufacturer name, product name, Major version ID, Hardware ID, local disk memory, card memory size will be displayed on the screen.



MUSIC PLAY

1. Under main menu, select "MUSIC" mode and press \downarrow To enter into submenu, i.e Media library, please choose from All music, Artist, Album, Genre, My Favorite, Directory list, Media Library Update, hold recollection, Resume Play and press \downarrow to enter to play.
2. Under media library page , select " ALL MUSIC" folder, press \downarrow to enter into the music directory. Press $+$ or $-$ Key or \leftarrow or \rightarrow key to scroll down the music list, select the music you want to play, press \downarrow to play.
3. In Music directory, press $+$ or $-$ key to select your favorite music, long press \downarrow button to add it to your favorite list, then short press \downarrow to confirm to add to the favorite list. Go back to the media library and select my favorite, you are able to find the music you have just added.
4. During playback, long press \downarrow to pop up playback setup menu, repeat setup, playback setup, Microsoft sound effect, sound effect selection, my favorite sound effect, OSD.



Repeat setup

- A. Single play: stop after one play
- B. Single repeat: repeat playback of selected music file
- C. Repeat all once: repeat all music files once
- D. Repeat all: repeat playback of all music files
- E. Audition: listening to the first 10 seconds of all music and jump to next.

Playback setup

User can select continuous play or random play.

Sound Effect setup

User can select the following sound effect: normal/Microsoft sound effect/Rock/Pop/Classic /Bass/Jazz

OSD

User can set to display lyrics or frequencies or hide all.

NOTE: User can download the lyrics from the internet or using lyrics editor to make lyrics own-self, then save it under the same name with the music, lyrics will be synchronized when playing the music.

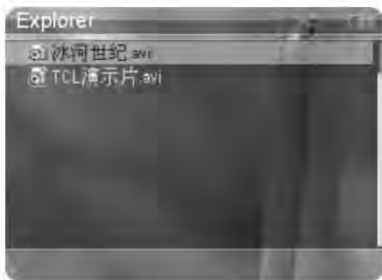
Some of the MP3/WMA music file may have special coding which may not be played properly on this device, please convert it using the audio converter first and then play on this device.

APE files can only support normal and fast compressed files of 3.95, 3.97, 3.98 Version.

Setup Saving

If needs to save any custom settings, go back to the main menu, long press \downarrow for approx 2 seconds to switch off the device, all custom settings will be auto saved, when restart the device next time, all new custom settings will take effect. If after custom setup, the device were switched off by the power switch, all custom settings will get lost and will not take effect when device started next time.

VIDEO PLAY



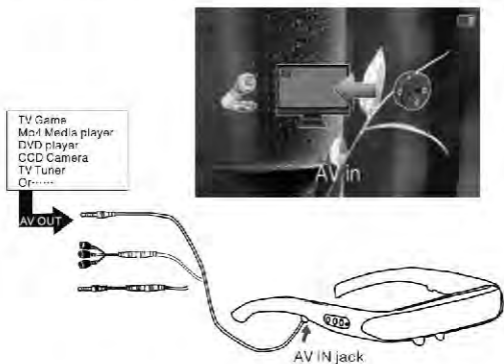
- 1.Under main menu, short press $+$ or $-$ key to select "VIDEO" menu and press \downarrow to enter into submenu, scroll down to the movie list and select one you want to play, press \downarrow to play it.
- 2.During video play, press $+$ key or $-$ key to adjust the volume, long press volume key to change volume consecutively. Short press \ll or \gg key to jump to last or next file, long press to fast forward or fast rewind.
- 3.Under Explorer page, select the file you want to play, press \downarrow to play it.
- 4.During movie play, short press \ll or \gg to jump to last or next movie, long press of \ll or \gg will fast fwd or fast rwd the movie, short press \downarrow to pause the movie that is being play then short press \odot to quit from current movie.

NOTE: RM/RMVB video files only support resolution below 720*576, bigger capacity the file is, more time the buffering will request.

AVI video files only support resolution below 800*480, bigger capacity the file is, more time the buffering will request.

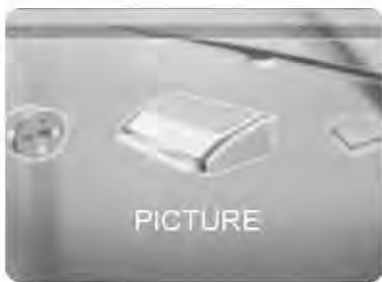
Some of the supported video files may be corrupted during the transfer and cannot be displayed on this device, please convert it first before playing it on this device.

AV IN



1. This device is adaptable to most known multimedia video devices such as iPod Video, DVD, MP4, VCR and etc. If video cannot display properly, you need to use adaptors or transit cable included in the kit. Please refer to the illustration above.
2. Under main menu, press $+$ / $-$; or \ll / \gg key to select "AV In" menu and press \downarrow key to enter.
3. Under AV play mode, press $+$ or $-$ key to adjust volume and \circlearrowleft key to return to the main menu.

PICTURE BROWSING



1. Under main menu, press **+** or **-** key to select “PICTURE” menu and then press **↵** to enter into picture mode, press again the **↵** button to browse the picture selected, Press **+** or **-** key or **⏪** or **⏩** key to scroll up or down the list.
2. Press **↻** to exit from the picture mode and go to the parent folder or main menu.
3. During Picture browsing, press **↵** to pop up a setup menu and select swivel clockwise, swivel unclockwise, zoom in, zoom out, browsing and etc.

Note: there are some Jpeg files that works on Macbook may not display well on this device, please use the windows based software to convert it first before showing on this device.

EBOOK



1. Under main menu, press $+$ or $-$ key or \leftarrow or \rightarrow key to scroll down to Ebook menu and then press \downarrow button to enter into the Ebook submenu, press \downarrow again to display the selected TXT file.
2. Under main menu, select " Explorer" and then press \downarrow to enter into the submenu, press $+$ or $-$ key or \leftarrow or \rightarrow key to select the txt file you wish to read, press \downarrow to open up the txt file. Use Volume up or down key to flip pages. Press \curvearrowright key to exit to submenu.
3. During Ebook reading, short press \downarrow button to pop up setup menu to set different reading features, such as jump pages, bookmark, load bookmark, delete bookmarks, set font, set color browser mode, flip time, mode and etc.

Note: This device support ANSI coded TXT files only. Other format TXT files can be converted by Microsoft embedded software Notepad. Open the files in Notepad and save it as ANSI *.txt format and it will display properly on this device.

EXPLORER

Explorer is one of the most important features this device renders. It helps user to know clearly the files and file types stored on this device and make easy to locate the files and play them.

Under main menu, select "Explorer" and then press \downarrow to enter into the submenu, press $+$ or $-$ key or \leftarrow or \rightarrow key to select the file you wish to play or browse, press \downarrow to play it. Press \odot key to exit to submenu.

USB DISPLAY MODE

This device has high speed 2.0 USB port and can function as a standard mobile disk. It supports Windows 98 (driver needed) Windows 2000/XP/Vista. When connected to PC thru USB port, this device will be shown as an external drive, double click to open it, then you are able to read and write now.

RECHARGING

Using the provided USB/DC cable to charge this device, you can plug the USB side to a standard computer USB port or you can use a standard USB AC adaptor.



If you are recharging when this device is powered on, the battery icon on the up right corner of the screen will show the status of the recharging. If recharge at device power off mode, the LED indicator on left arm will light up in red, when it's fully recharged, the red LED light will go off.

This device can continue working while being recharged. However, if it was being charged thru a computer USB port, it will not function and will show as USB mode. Then if you need to use it while recharging, please charge it using a AC adaptor.

One full recharge will take about 3 hours in power off mode.

FIRMWARE UPGRADE



1. Please log in to our website to download the Firmware upgrade program or inquiry from us.
2. Please copy the downloaded program to the nand flash of the device, exit safely from PC connection, and then restart the device.
3. Under main menu, select "SETTINGS" and press to enter into the submenu, choose "System Setting" and then "Upgrade", the device will start searching the program and upgrade, if no result, a popup menu will say "no firmware", press "OK" to exit.
4. When the device is being upgraded, all keys will be functionless and screen will show upgrade progress.
5. When the menu prompts "RESTART", restart the device and then wait for the upgrade to complete before usage.

TROUBLE SHOOTING

Symptom	Possible Reason	Solution
Cannot start up.	No power	Recharge the battery or connect to power source
No audio	Mute Faulty headset	Increase the volume Change headset or check if headset connection is right
Heavy noise	Music file corrupted Headset faulty	Change another music file Change headset
Improper language display	Wrong language setup	Change to correct language in language settings
Cannot download files	Wrong PC connection Memory is full USB cable is faulty	Connect again Clear memory Change a USB cable

DISCLAIMER

User are kindly requested to backup safely their files before using this device we are not responsible for any loss or damages of the files or data or any further direct or indirect losses incurred due to the malfunction of software, hardware, product repair and or any other unexpected event. Also we cannot guarantee that this manual would be fully understood without any misunderstandings, therefore, we hold no responsibility towards any damages or losses to the product or the third party due to the misinterpretation to this manual by user.